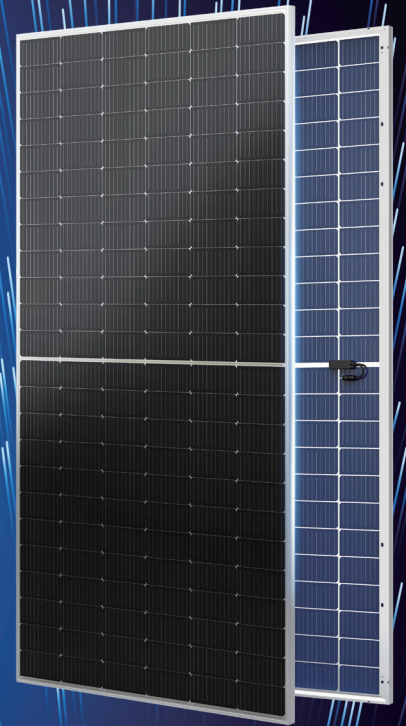


M10-MBB TOPCon Mono Bifacial Module

(144 Half Cells)

12 years Product warranty 30 years Linear power warranty

Integrated Solar Manufacturing & Technology Since 1964



570-590W /Output power

22.80% /Maximum efficiency

0~+5W /Power tolerance



PID Resistant

Strict selection of encapsulation materials eliminates PID risk.



Better Performance

30-year linear warranty, 1% decline in the first year, an average annual decline of 0.40% over the first 30 years, increased return on investment. No Boron-oxygen LID (Light Induced Degradation).



High Returns

The n-type module has lower annual attenuation, better photoelectric conversion efficiency and temperature coefficient benefit, bifaciality can reach 80%.



Multi Busbar Technology

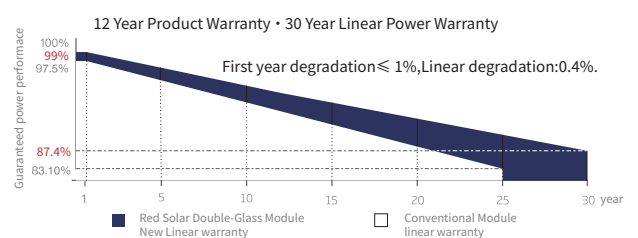
Better light utilization and current collection ability, effectively improve the power output and reliability.

Comprehensive product certification

- IEC 61215 IEC61730
- IEC TS 62804 (PID Resistant)
- IEC 62716 (Ammonia Corrosion)
- IEC 61701 (Salt Spray Corrosion)
- IEC TS 62941 (PV quality Management System)
- ISO9001:2015 (Quality Management System)
- ISO14001 (Environmental Management System)
- OHSAS18001 (Occupational Health and Safety Management System)



Excellent Power Guarantee



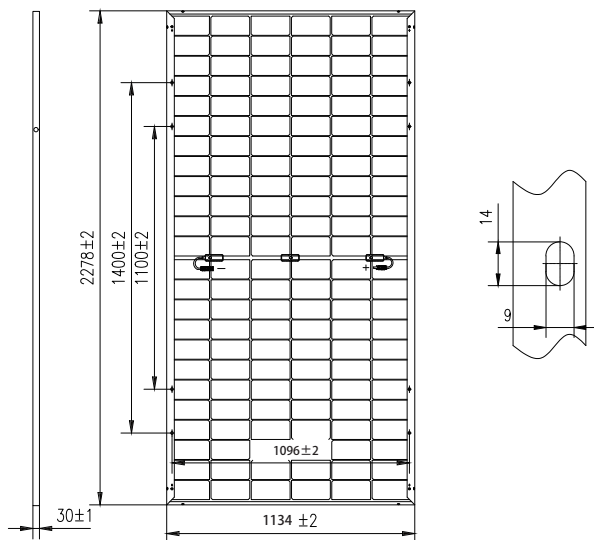
Model of PV Module

CETC-xxxT(GDF)/144

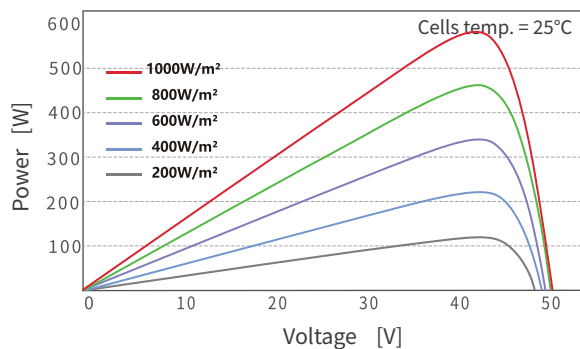
Power Range

570-590W

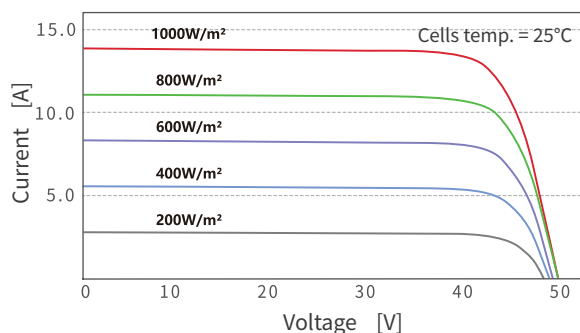
PV module dimensions (mm)



P-V Curves of PV Module



I-V Curves of PV Module



Electrical Parameter(STC)

Model	570T	575T	580T	585T	590T
Maximum power (W)	570	575	580	585	590
Working point voltage (V)	42.70	42.91	43.12	43.33	43.54
Working point current (A)	13.35	13.40	13.45	13.50	13.55
Open circuit voltage (V)	50.95	51.10	51.25	51.35	51.45
Short circuit current (A)	14.32	14.39	14.46	14.50	14.54
PV module efficiency	22.07%	22.26%	22.45%	22.65%	22.84%
Standard test conditions	AM1.5, Irradiance 1000w/m ² , Cell Temperature 25°C				

RearSide Power gain

	Maximum Power	598Wp	603Wp	609Wp	614Wp	620Wp
5%	Efficiency STC	23.19%	23.39%	23.59%	23.78%	23.98%
15%	Maximum Power	656Wp	661Wp	667Wp	673Wp	679Wp
	Efficiency STC	25.40%	25.62%	25.84%	26.04%	26.27%
25%	Maximum Power	713Wp	719Wp	725Wp	731Wp	738Wp
	Efficiency STC	27.61%	27.85%	28.09%	28.31%	28.55%

The Electrical performance parameters are neither just referred to one PV panel, nor are a part of the contract; They are only used as reference.

Mechanical Parameters

Module size	2278*1134*30mm
Number of solar cells	144Cells(2*6*12)
Weight	31Kg ±5%
Junction Box	IP68, 3 diodes
Cables	4mm ² , +:300mm/ -:200mm (Customizable)
Front plate glass	2.0mm,Ultra white AR coated semi-toughened glass
Rear plate glass	2.0mm, semi-toughened glass
Static load on the front	5400Pa
Static load on the back	2400Pa

Packaging&Transport

40'HQ container transport

36 Pcs/box × 20 box = 720 Pcs

Temperature Parameter

NMOT	42±2°C
Temperature coefficient of maximum power(Pmax)	-0.30%/°C
Temperature coefficient of open circuit voltage(Voc)	-0.25%/°C
Temperature coefficient of short circuit current(Isc)	+0.045%/°C

Maximum Ratings

Working temperature	-40~+85°C
Maximum system voltage	1500VDC
Maximum fuse rated current	30A

